

Grand Trunk Railway Ad-Hoc Committee Environmental and Infrastructure Discussion

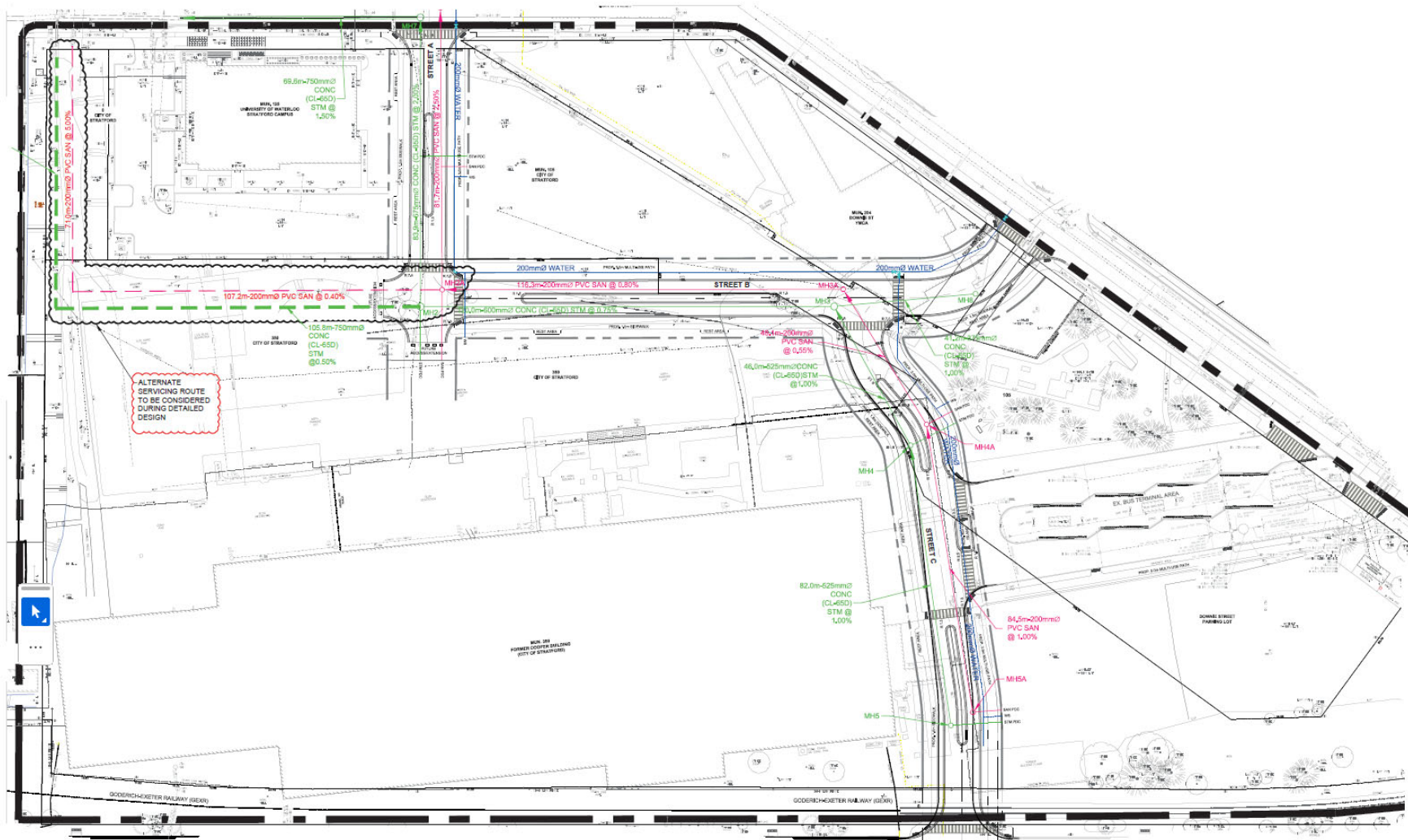
21 October 2024



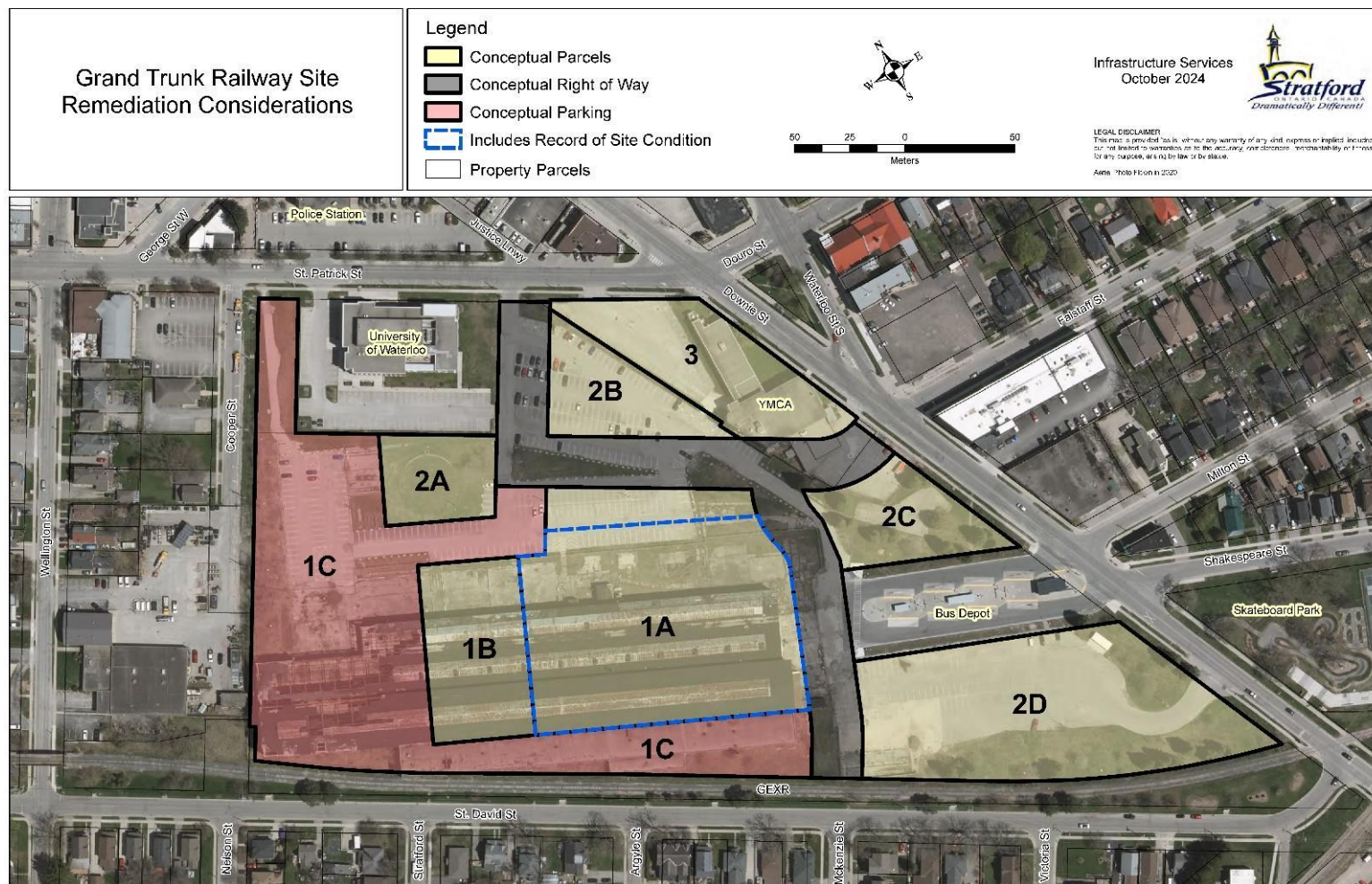
2018 GTR Master Plan



GTR 70 % Municipal Servicing Design



Conceptual Parcels



Establishing a Legal Roadway

Prior to the construction of any new municipal road, a provincially recognized public engagement and planning process must be undertaken in one of the following forms:

1. Plan of Subdivision
2. Municipal Class Environmental Assessment
 - Soon to be replaced by Municipal Project Assessment Process

Both options require setting in stone the road's location.

The verified road locations then assist **delineating specific parcels**



Known Environmental Site Conditions



Environmental Remediation Options

General Record of Site Condition (RSC) process if **managing** (leaving onsite) existing environmental impacts – Duration 24 to 36 months

1. Phase 1 (Desktop Study) and Phase 2 (Site Assessment)
2. Risk Assessment Report to site specific standards, including risk management measures that enable impacted soil to remain onsite
3. File of RSC and Certificate of Property Use

General RSC process if **removing** impact soils to meet proposed land use requirements – Duration 12 to 18 months

1. Phase 1 (Desktop Study) and Phase 2 (Site Assessment)
2. Full Site Remediation
3. File of RSC

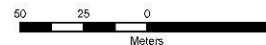


Parcel Considerations

Grand Trunk Railway Site Remediation Considerations

Legend

- Conceptual Parcels
- Conceptual Right of Way
- Conceptual Parking
- Includes Record of Site Condition
- Property Parcels



Infrastructure Services
October 2024



LEGAL DISCLAIMER
This map is provided as is, without any warranty of any kind, express or implied, included but not limited to, accuracy, completeness, timeliness, or fitness for any purpose, arising by law or by contract.
Aerial Photo Taken in 2022



Summary

Some takeaways:

1. This is a brownfield site, environmental impacts can be addressed but will take time.
2. Establishing a legal roadway through the legislated planning process will take 6-12 months.
3. Once a decision is made on a roadway and parcels, it will take 2-3 years to go through the environmental process.
4. Staff continue to move along initiatives that will help reduce future roadblocks and enable faster timelines for development, that don't restrict what is decided to be developed.



Questions?



2018 GTR Master Plan

