



Grand Trunk Renewal

Vision & Guiding Principles

The Grand Trunk site will transform into a generational asset that supports the idea of the City of Stratford as a great place to live. That means a prosperous, inclusive, sustainable, and welcoming community for everyone.

The renewal process for the site began by updating the project's original Vision Statement and Guiding Principles. That document outlines how the community wants this site to look and function. It also lays out the values that should guide any decisions around the site's development.

We did this through an extensive campaign of public engagement, asking YOU for your ideas on how to redevelop this important piece of municipal property.



Principles developed by you... for you.

Once we finished the engagement process, we gathered all the community feedback and determined that it fell into **six important principles:**



Sustainable + Fiscally Responsible



Celebrate Past + Future Forward



Inspiring + Inclusive



Distinct + Diverse + Multifunctional



Connected + Community-Focused

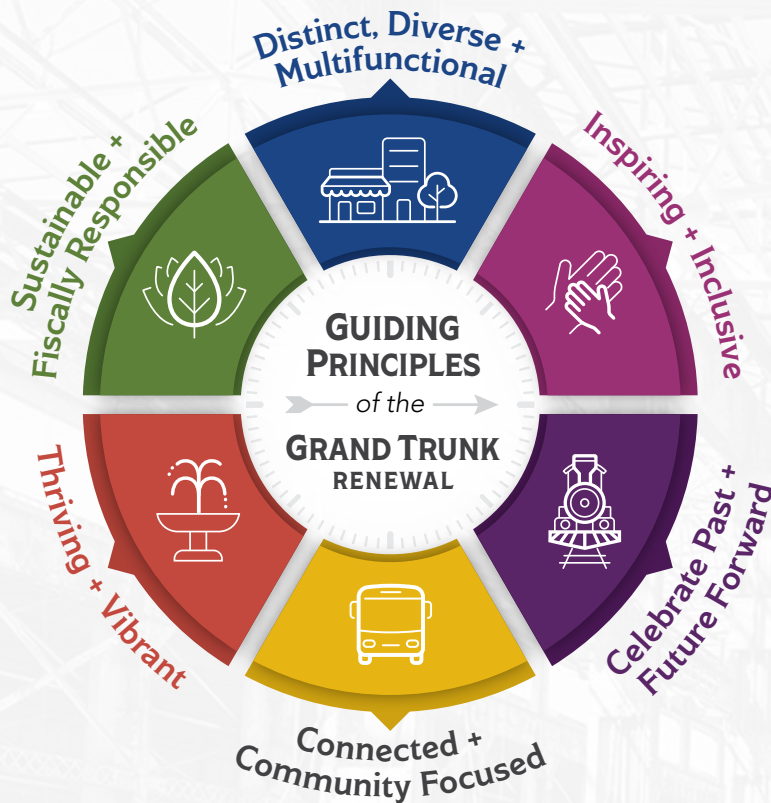


Thriving + Vibrant

These values will guide the city as it develops places, services and amenities in a dynamic centre of activity that serves both Stratford's residents and its visitors.



Based on what you told us, here are the Grand Trunk Renewal Vision & Guiding Principles:



Sustainable + Fiscally Responsible

Create a Sustainable, Resilient and Fiscally Responsible Community

- Net-zero carbon emissions
- Resilient to climate change
- Generate new revenue
- Partnerships and strategies that serve the public

Thriving + Vibrant

Cultivate Cohesive and Vibrant Community Spaces

- Spaces for living, learning, health, wellness, recreation, entrepreneurship
- Social connections and inter-generational relationships
- Gathering spaces that foster a strong sense of community

Connected + Community Focused

Foster Connectivity and Community Wellbeing

- Attainable and affordable housing
- Amenities: day care, shopping, community gardens and kitchens, services
- Safe, inclusive, welcoming environments
- Connectivity: Grand Trunk + Downtown + Neighbourhoods + adjacent developments

Inspiring + Inclusive

Create an Inspiring, Inclusive and Dynamic Community Meeting Point

- Foster sense of belonging and welcoming for everyone
- Promote play, curiosity, social gathering
- Celebrate innovation, culture, creativity
- Vibrant, accessible design for all seasons

Distinct, Diverse + Multifunctional

Design Distinct, Diverse and Multifunctional Urban Spaces

- Higher-density buildings for diverse housing
- Highlight unique history of Grand Trunk site
- Mix of living, learning, recreation and gathering spaces
- Public spaces support recreation, culture, community interaction
- Using Transit Hub for transit-friendly development
- Safe spaces for pedestrians and cyclists

Celebrate Past + Future Forward

Honour the Past, Address Current Needs, Innovate for the Future

- New uses that celebrate site's history and heritage
- Showcase social, cultural and economic history
- Address present needs, anticipate future challenges
- Make space flexible, adaptive